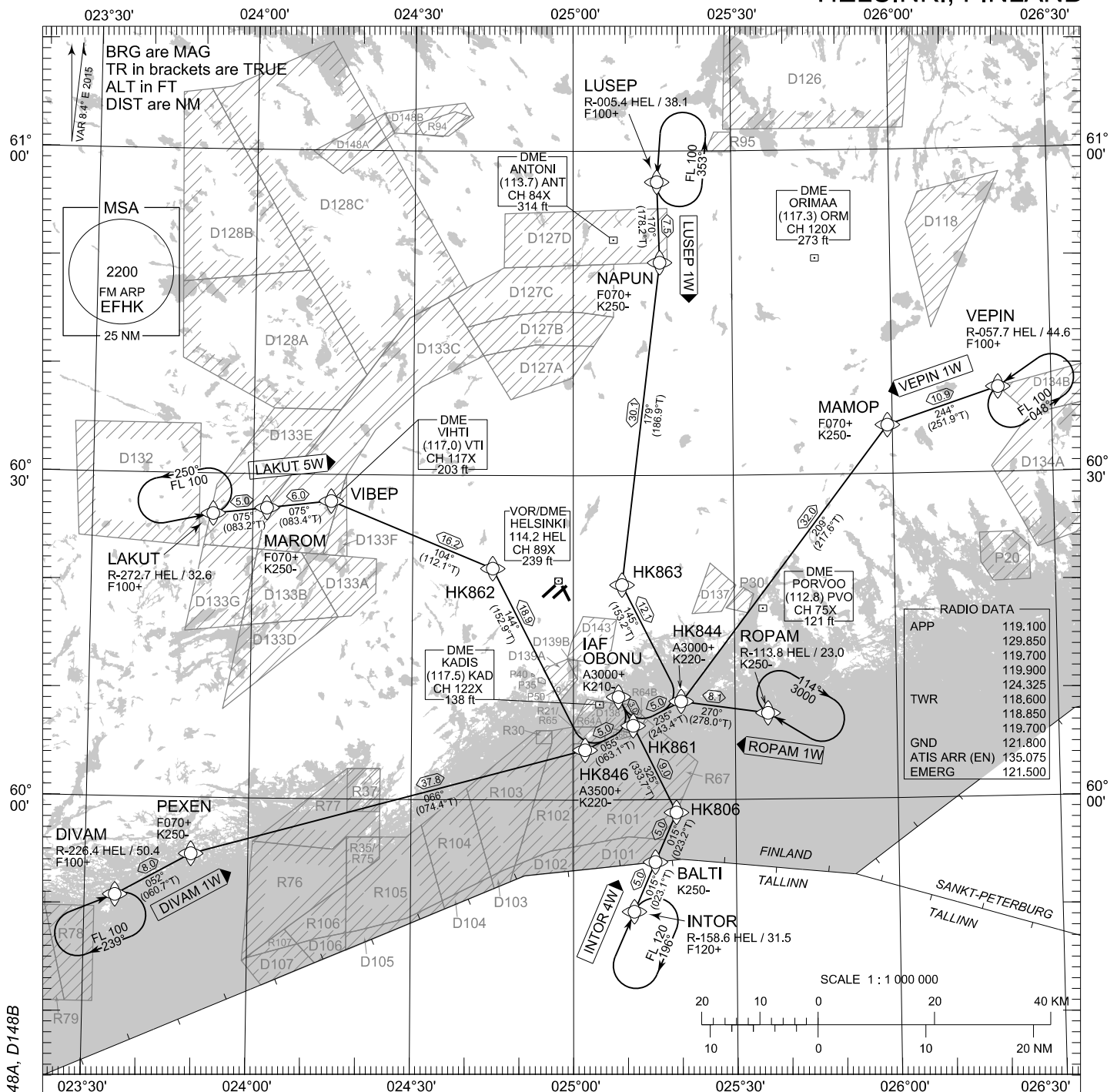


STANDARD ARRIVAL CHART INSTRUMENT (STAR) - ICAO

TRANSITION ALT
5000

RNAV (DME/DME or GNSS) STAR RWY 33
HELSINKI-VANTAA AERODROME
HELSINKI, FINLAND



RNAV STAR RWY 33

DIVAM 1W INTOR 4W LAKUT 5W LUSEP 1W ROPAM 1W VEPIW 1W

NAV SPECIFICATION: RNAV 1 OR P-RNAV APPROVAL REQUIRED. OTHERWISE ADVISE ATC.

DME/DME OPS: MORE THAN 2 DME INPUTS CANNOT BE GUARANTEED AT ALL TIMES.

AREA MNM ALT: SEE AMA INDEX, AIP ENR 6.1 - 3

ROUTES: RNAV PROC CODING ON THE VERSO OF THE CHART.

STAR MUST BE FLOWN ACCORDING TO THE DEFINED WAYPOINT SEQUENCE UNTIL THE LAST WAYPOINT. SEPARATE CLEARANCE TO INBOUND IS NOT REQUIRED.

ATC WILL GIVE DESCENT CLEARANCES.

WPT CONSTRAINTS: ALT / FL / SPEED CONSTRAINTS MUST ALWAYS BE FOLLOWED AS PUBLISHED UNLESS EXPLICITLY CANCELLED BY ATC.

CD OPS: BY ATC CLR IF TFC PERMITS. PLAN CD PATH ACCORDING TO STAR.

RCF: SELECT TRANSPONDER CODE 7600.

RNAV STAR HAS BEEN GIVEN AND ACKNOWLEDGED: FOLLOW THE STAR TO THE RESPECTIVE RWY AND EXECUTE IAP AND LAND.

DURING RADAR VECTURING BEFORE IAF: PROCEED TO ROPAM HLDG USING LAST ASSIGNED AND ACKNOWLEDGED ALT/FL OR MHA IF HIGHER. LEAVE HLDG ACCORDING TO CURRENT FLIGHT PLAN ETA, USE RNAV STAR TO JOIN IAP AND EXECUTE IAP FOR LAST ACKNOWLEDGED RWY.

AIRCRAFT HAVING TELEPHONE, CALL +358 9 8277 3324.

CHG: ADDN P35, P40, P50, D148A, D148B

EFHK RNAV STAR RWY 33										
RTE NAV SPEC	SEQ NR	P/T	WPT		MAG	GEO TR	DIST NM	Turn Direction	Constraints	
			ID	Flyover					LVL	Speed
DIVAM 1W RNAV 1 or P-RNAV	010	IF	DIVAM	-	-	-	-		F100+	
	020	TF	PEXEN	-	052°	060.7°T	8.0		F070+	K250-
	030	TF	HK846	-	066°	074.4°T	37.8		A3500+	K220-
	040	TF	HK861	-	055°	063.1°T	5.0	L		
	050	TF	OBONU	-	325°	333.2°T	3.0		A3000+	K210-

INTOR 4W RNAV 1 or P-RNAV	010	IF	INTOR	-	-	-	-		F120+	
	020	TF	BALTI	-	015°	023.1°T	5.0			K250-
	030	TF	HK806	-	015°	023.2°T	5.0	L		
	040	TF	HK861	-	325°	333.7°T	9.0			
	050	TF	OBONU	-	325°	333.2°T	3.0		A3000+	K210-

LAKUT 5W RNAV 1 or P-RNAV	010	IF	LAKUT	-	-	-	-		F100+	
	020	TF	MAROM	-	075°	083.2°T	5.0		F070+	K250-
	030	TF	VIBEP	-	075°	083.4°T	6.0	R		
	040	TF	HK862	-	104°	112.1°T	16.2	R		
	050	TF	HK846	-	144°	152.9°T	18.9	L	A3500+	K220-
	060	TF	HK861	-	055°	063.1°T	5.0	L		
	070	TF	OBONU	-	325°	333.2°T	3.0		A3000+	K210-

LUSEP 1W RNAV 1 or P-RNAV	010	IF	LUSEP	-	-	-	-		F100+	
	020	TF	NAPUN	-	170°	178.2°T	7.5		F070+	K250-
	030	TF	HK863	-	179°	186.9°T	30.1	L		
	040	TF	HK844	-	145°	153.2°T	12.1	R	A3000+	K220-
	050	TF	HK861	-	235°	243.4°T	5.0	R		
	060	TF	OBONU	-	325°	333.2°T	3.0		A3000+	K210-

ROPAM 1W RNAV 1 or P-RNAV	010	IF	ROPAM	-	-	-	-			K250-
	020	TF	HK844	-	270°	278.0°T	8.1	L	A3000+	K220-
	030	TF	HK861	-	235°	243.4°T	5.0	R		
	040	TF	OBONU	-	325°	333.2°T	3.0		A3000+	K210-

VEPIN 1W RNAV 1 or P-RNAV	010	IF	VEPIN	-	-	-	-		F100+	
	020	TF	MAMOP	-	244°	251.9°T	10.9	L	F070+	K250-
	030	TF	HK844	-	209°	217.6°T	32.0		A3000+	K220-
	040	TF	HK861	-	235°	243.4°T	5.0	R		
	050	TF	OBONU	-	325°	333.2°T	3.0		A3000+	K210-

RNAV Holdings							
ID	INBD TR	INBD MAG	Turn Direction	MAX IAS	MNM HLDG LVL	TIME	DIST NM
DIVAM	067.4°T	059°	Right	230 KT	F100	1 MIN	-
INTOR	023.5°T	016°	Right	230 KT	F120	1 MIN	-
LAKUT	077.9°T	070°	Left	230 KT	F100	1 MIN	-
LUSEP	181.3°T	173°	Left	230 KT	F100	1 MIN	-
ROPAM	302.0°T	294°	Right	230 KT	A3000	1 MIN	-
VEPIN	236.1°T	228°	Left	230 KT	F100	1 MIN	-

WPT COORD
SEE PAGE EFHK AD 2.15 - 1